

# South East Dorset's Transforming Cities Fund Programme Update

greener | healthier | better connected

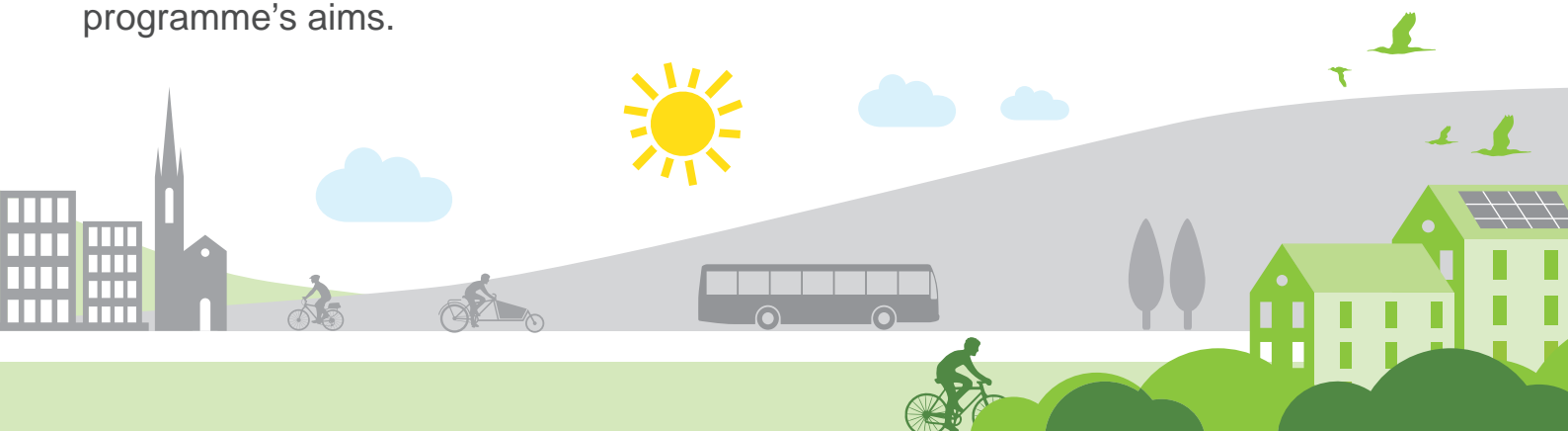
Edition 2 – December 2022

## Welcome!

South east Dorset's Transforming Cities Fund (TCF) programme has been making great progress this year with sustainable travel improvements at ten locations already complete or currently underway. Projects such as Leigh Road, Upper Gardens, Kings Park and Whitelegg Way now offer safer sustainable transport routes with new facilities for walkers, cyclists and bus passengers.

Of course, the pandemic and on-going fuel-cost and inflationary pressures have all had a financial impact on the programme. Despite this we remain committed to our ambition of creating a fully connected network of sustainable travel routes across south east Dorset and have been pressing on with delivery of the new infrastructure to transform local travel as quickly and efficiently as possible.

Thank you for your continued support in helping us to create safer, greener, healthier journeys for everyone in the region. We hope that you enjoy this newsletter and that it gives you an overview of the real progress we are making in achieving the TCF programme's aims.



# Work to date

Read about all the work on the ground, which has either been completed, is under construction or is about to commence.

## TCF Route Bournemouth Railway Station to / from Jumpers Common, Christchurch

### Project – Kings Park

#### Completed

A new cycling and walking route through Kings Park including separate walking and cycling paths from the Ashley Road entrance to the new toucan crossing on Harewood Avenue.



The new segregated cycling and walking paths through Kings Park, Bournemouth.

[▶ Watch the Kings Park video](#)

“We are delighted that the new cycling and walking facility in Kings Park is now open to the public and without question it is a vast improvement on the old route.” *Jeff Mostyn, Chairman of AFC Bournemouth*

[More information on Kings Park project](#)

### Project – Ashley Road

#### Due to start summer 2023

Plans for a new toucan crossing and repositioning of existing crossing on Ashley Road, near the entrance to Kings Park currently at design stage.

### Project – Sevenoaks Drive

#### Due to start summer 2023

Plans for cycle, junction and lighting improvements currently at design stage.



Jeff Mostyn, Chairman of AFC Bournemouth on the new cycle and walking path in Kings Park.

## TCF Route Bournemouth Town Centre to / from Ferndown

### Project – Upper Gardens

#### Phase 1 – Completed

A new shared cycle and walking route from Bournemouth Square to the gardens' entrance on Prince of Wales Road. Widened and resurfaced cycle / footpath with improved lighting for greater security.

“I cycle on this path to get to work every week and am really pleased with the improvements that have been put in place. It's a much smoother ride, and the enhanced lighting also really makes a difference.” *Peter Brown, cycling commuter*

[▶ Watch the Upper Gardens video](#)



The shared cycling and walking path in Upper Gardens Bournemouth, beside the new artwork created by local schoolchildren and Bournemouth artist May Summers-Perkins.

#### Phase 2 – due to start summer 2023

Widening of the existing footway on eastern side of Prince of Wales Road and Queens Road creating shared space for pedestrians and cyclists with new crossing points on Prince of Wales Road, Queens Road and Branksome Wood Road.

[More information on Upper Gardens project](#)

### Project – Leven Avenue and Benellen Avenue

#### Due to start summer 2023

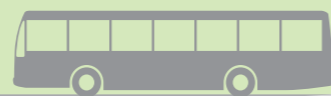
Walking and cycling improvements along Glenferness Avenue, Leven Avenue and Benellen Avenue to link with the Upper Gardens improvements, along with speed limit reduction to 20mph.

[More information on Leven and Benellen Avenue project](#)



Artist's impression of the proposed raised table at the Leven Avenue / Benellen Avenue / Walsford Road junction.

[Click here for more information on our six TCF sustainable transport routes](#)



## Project – Glenferness Avenue

### Due to start autumn 2023

Planning application for the new bridges over the railway line on Glenferness Avenue approved.

A series of walking and cycling improvements planned along Glenferness Avenue.

[More information on Glenferness Avenue project](#)



Artist's impression of the new cycling and walking bridges across the railway line on Glenferness Avenue.

## TCF Route Poole Town Centre to / from Wareham Road, Holton Heath

### Project – Rigler Road to Hinchcliffe Road and Blandford Close



The new shared cycling and walking paths along Holes Bay, behind Cornerstone Academy.

[Watch the Rigler Road to Blandford Close and Hinchcliffe Road video](#)

Cllr Mike Greene with Harley, Patryk, Sophia and Sam Davidson (Principal) of Cornerstone Academy.



### Largely complete

A new shared path including crossing point from Rigler Road through the Holes Bay development site linking to Blandford Close and Hinchcliffe Road. New shared cycling and walking path along Holes Bay behind Cornerstone Academy. A final small section to link in Hinchcliffe Road is due to start summer 2023 once protected migratory birds have left.

“Our pupils often used the old bridleway to get to school and it was less than ideal, especially in the winter months, where it would get very muddy. The new path is an excellent improvement and has made it much easier for pupils to safely cycle and walk to school.”

*Ms Sam Davidson, Principal of Cornerstone Academy*

## TCF Route Poole Town Centre to / from Ferndown and Wimborne

### Project – Fernside Road and Garland Road, Poole

### Completed

A new four-way junction at Fernside Road, Hunt Road and St Mary's Road with new toucan crossings on all arms. A new parallel crossing over Garland Road next to St Mary's Road junction.

“The improvements on these two junctions were very much needed as they are busy junctions and most of our pupils need to cross there. Now our parents and children can walk and cycle to school much more safely.”

*Emma Hemsil, Assistant Head of St Mary's Catholic Primary School*



The new parallel crossing on St Mary's Road near the Garland Road junction.

[Watch the Fernside Road and Garland Road video](#)

### Project – Ringwood Road, Poole – Hunt Road to Mountbatten Roundabout

### Due to start spring 2023

#### Phase 1 – Mountbatten Roundabout improvements

Traffic light improvements to introduce bus priority through the junction and improve traffic flow.

#### Phase 2 – Ringwood Road improvements

A series of walking and cycling improvements on Ringwood Road in Poole from Hunt Road to Mountbatten Roundabout. A public information event took place in June 2022.

[More information on Ringwood Road, Poole project](#)



Artist's impression of the new sustainable travel improvements on Ringwood Road, Poole.



## Project – Ringwood Road, Ferndown – Longham Mini Roundabouts to Trickett’s Cross Roundabout

### Phase 1 – Longham Mini Roundabouts to south of Church Road – completed

A new widened, shared walking and cycling path with an upgraded junction and crossing layout at Casterbridge Road (next to the Angel Inn).

### Phase 2 – Victoria Road to Trickett’s Cross

Under design and due to start late spring 2023.

[More information on the Ringwood Road, Ferndown project](#)



The new shared cycling and walking path, and bus stop improvements on Ringwood Road, Ferndown.

## Project – Wimborne Road, Ferndown – Trickett’s Cross Roundabout to Canford Bottom Roundabout

### Phase 1 – Trickett’s Cross Roundabout to West Moors Rd – completed

A new widened shared path, improved bus stops and a new crossing near Trickett’s Cross Roundabout.

### Phase 2 – West of Cobham Road to Canford Bottom Roundabout – completed

New cycle and walking path, improved bus shelters and new light-controlled crossing near Stapehill Road.

### Phase 3 – Cobham Road junction to West Moors Road

Under construction – due to complete by winter 2023.

[Watch video on Wimborne Road, Ferndown project](#)



The new cycling and walking route under construction on Wimborne Road, Ferndown.

## Project – Leigh Road – Wimborne Road West, Wimborne and Colehill

→ The first TCF project to complete, with 2.3km of new separated walking and cycle paths, reduced speed limit, improved bus stops and three new pedestrian and cycle crossings.

→ A small section around the junction to Lonsdale Road will be completed by Dorset Council and Barratt Homes when they complete the new layout for access to the development.

“The cycling and walking paths are fantastic, I’m really pleased to see this investment. It feels so much safer, with plenty of space for everyone to use. The dedicated walking and cycle paths and reduced speed limit are both very welcome safety improvements and will really encourage people to travel actively in the area.”

*Mark Samways, local business owner*



New walking and cycling paths and parallel crossing on Leigh Road and Wimborne Road West from Wimborne to Colehill / Canford Bottom.



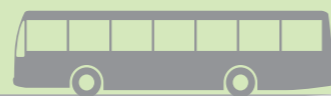
Councillor Ray Bryan of Dorset Council, Sarah Leeming of Sustrans and Mike Carhart-Harris, a local resident, keen runner and cyclist at the completion of the Leigh Road / Wimborne Road West cycling and walking improvements.



Improvements include new bus service infrastructure as well as cycling and walking lanes.

[Watch the completion video of Leigh Road – Wimborne Road West project](#)

Click [here](#) for more information on our six TCF sustainable transport routes



## TCF Route Poole Town Centre to / from Merley, Poole

### Project – Wimborne Road, Poole – Serpentine Road to the New Inn junction – under construction

- Phase 1 – Serpentine Road Roundabout to Kings Close – mostly complete**  
Roundabout improvements with three new parallel crossings and new shared use paths.
- Phase 2 – New Inn junction improvements – due to start January 2023.**
- Phase 3 – New cycle lanes between Heckford Road and New Inn junction with improvements to Garland Road / Tatnam Road Junction – due to start summer 2023.**



Artist's impression of improvements on Wimborne Road, Poole at the Garland Road / Tatnam Road Junction.

[More information on Wimborne Road, Poole project](#)

[Watch the Wimborne Road Poole video](#)

Improvements on Wimborne Road Poole include upgraded bus service infrastructure.



### Project – New Inn Junction to Trigon Road Footbridge

**Due to start summer 2023**

Improvements to Darbys Lane junctions with Dorchester Road and Heath Avenue.



## TCF Route Merley Poole to / from Christchurch

### Project – Queen Anne Drive and Magna Road up to Knighton Lane

#### Completed

- New 3.7km shared walking and cycling path, new junction layouts, toucan crossings and light-controlled crossings.
- Improved bus shelters with raised access and textured paving for disabled and sight impaired users.

“Walking and cycling is more environmentally friendly and it gets your muscles working. Also, if the traffic is bad and you aren’t going anywhere too far, you can actually get there quicker if you walk or cycle there, rather than driving in the car.”

*Jess aged 10 and her sister Abi, who both cycle to school*



Jess and Abi love cycling on the new, safe cycling and walking facilities on Queen Anne Drive, Merley.



New shared cycling and walking route on Magna Road from Merley to Knighton Lane, Bearwood.

[Watch video about Queen Anne Drive project](#)

### Project – Magna Road from Knighton Lane to Bear Cross Roundabout

**Due to start summer 2023**

[More information on the Gravel Hill to Bear Cross Roundabout project](#)



## Project – Whitelegg Way, Bournemouth

### Completed

- New segregated cycle lanes on either side of Whitelegg Way.
- Improved bus stop shelters.
- New toucan and raised table crossings.
- Improved walking paths and street lighting.
- Reduced speed limit.

### [More information on Whitelegg Way project](#)



Segregated cycle lane and junction improvements on Whitelegg Way, Bournemouth.



New cycle and walking lanes and bus shelter improvements on Whitelegg Way, Bournemouth.

## Project – Northbourne and Redhill Roundabouts and Castle Lane West

### Due to start spring 2023

- 2.5km of new walking, cycling and bus improvements planned around Northbourne and Redhill Roundabouts and Castle Lane West to the Broadway Roundabout.
- Public information event held November 2022.
- Ground investigation work currently underway and expected to last until March 2023.

### [More information on Northbourne and Redhill Roundabouts and Castle Lane West project](#)

## Our TCF support and funding for active travel projects

### Beryl Bikes

This summer saw the launch of the Beryl Bike rental service in the Dorset area with 122 new Beryl Bikes now available to hire at 50+ Beryl Bays across Wimborne, Colehill, West Parley, West Moors and Ferndown.



Dorset councillors and Beryl Bike staff at the launch of the rental service.



Over 1,200 bikes, 500 e-scooters and 20 e-bikes are now available for hire across the whole of south east Dorset.

