

Children's Playground Strategy & Parks Landholdings Review

The above mentioned report went to Cabinet in March this year.

It outlined proposals for investment in play areas across the Borough. The plan is to have bigger and better play areas for each neighborhood in the borough.

Natural play areas (adding more trees, rocks, sand, water and planting alongside traditional play equipment) will be developed in many areas.

Seventeen small sites across the borough were passed for further investigation for use as sites for housing, subject to public consultation.

Our priority is to get more people into our parks, more often and for longer visits.

We currently have many small play areas and an uneven distribution of facilities. The plan creates a better distribution of play across the Borough and ensures that every local area has a high quality play area (like improving Muscliff and Bradpole Road and making a decent parks for both the Townsend and Stourvale Estates.

The proposals rely on additional investment, which should be met through developer contributions and through some small local sales/development of open space – with an accompanying reinvestment in retained local spaces.

Throop & Muscliff Ward Proposals

Create a new park at **Setley Gardens (£90,000 this year)**. **Muscliff Park** to be developed as neighbourhood park (£75,000 next year). Both with toilets and a café.

Local play sites at **Colehill Crescent, Stratton Road, Rownhams Road** and **Chesildene Avenue**.

Develop a number of small mown amenity areas to have more natural planting and new native trees, such as **Durweston Close**.

Close small play sites at **Wishart Gardens, Cucklington Gardens & Michelmersh Green**.

Consider sale of small sites at **Sway Gardens, Chesildene Drive** and **Godshill Close**.

Strouden Proposals

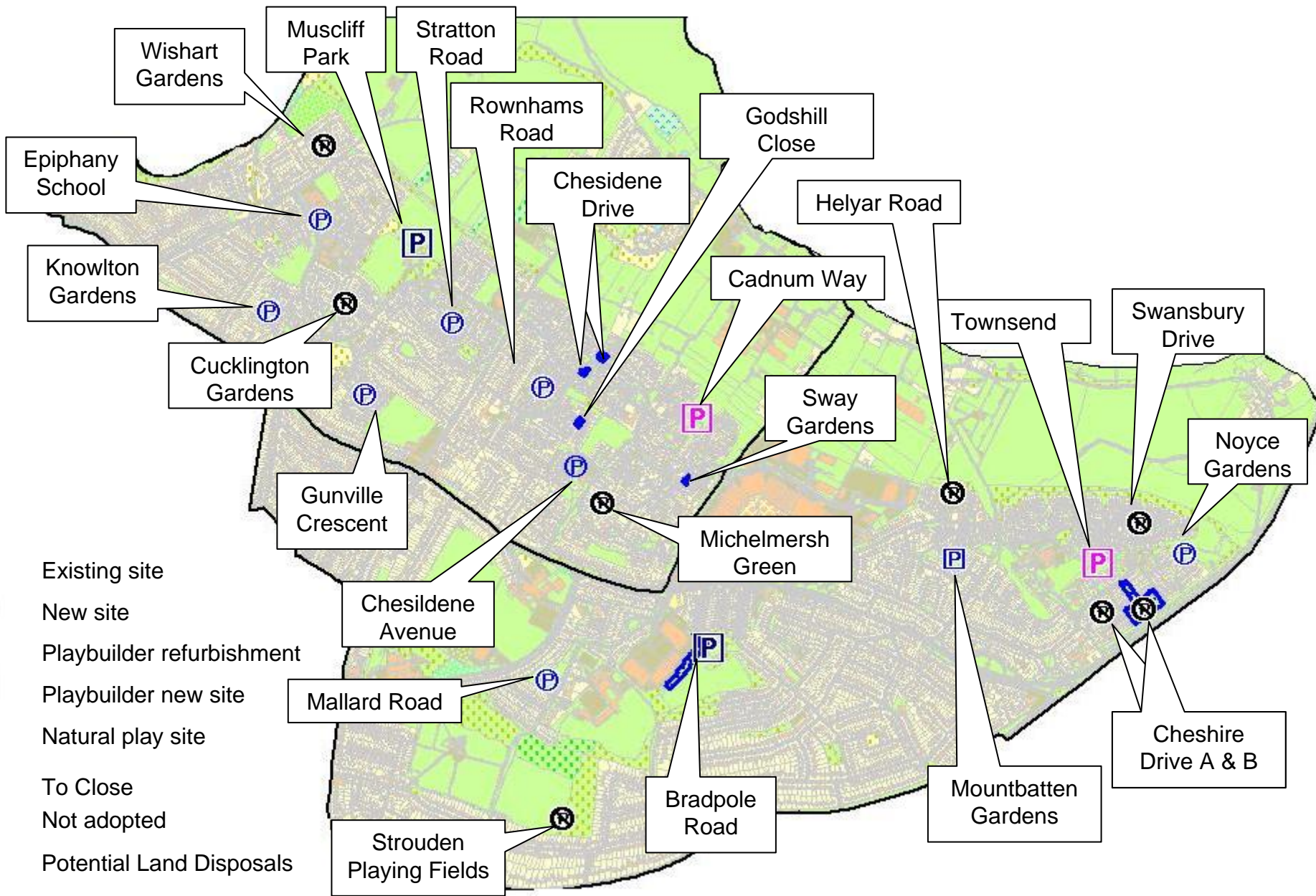
New neighbourhood play site in Townsend (£100,000 next year) with ambition for café & toilets.

Local play sites at Mountbatten Gardens, Bradpole Road, Mallard Road and Noyce Gardens

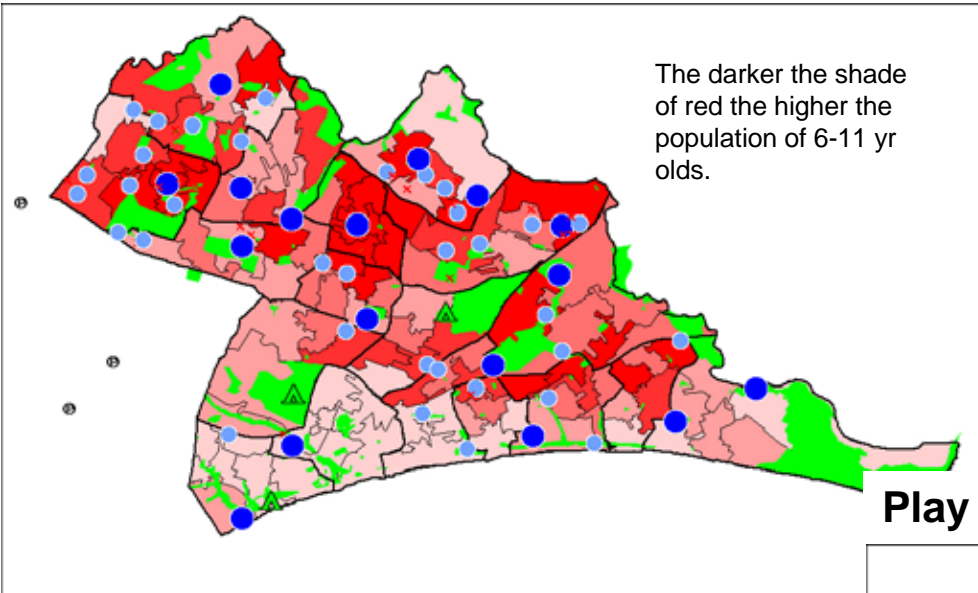
New Natural play at site at Queens Park

Close old play sites at Cheshire Drive, Swansbury Drive, Helyar Road & Strouden Woods

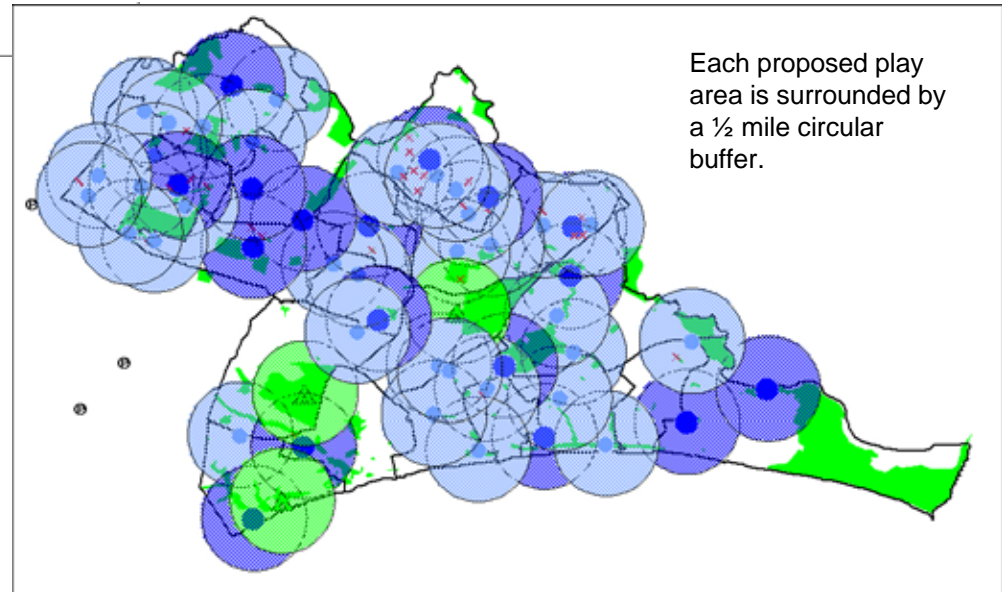
Consider sales at Strouden/Bradpole (part), Cheshire Drive, Stone Gardens & Swansbury Drive.



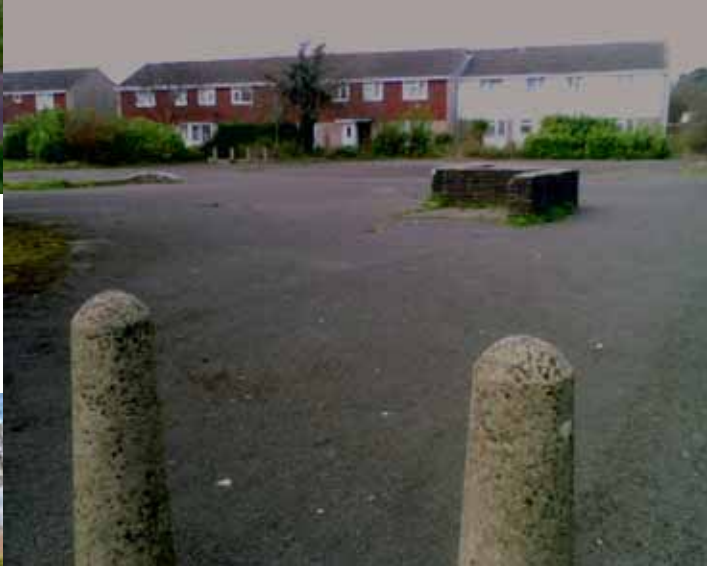
Play Areas & Pop. Density 6-11 yrs (2001)



Play Areas ½ mile catchment



This is what we'd like to avoid in the future





at the heart of your
Community

Bournemouth
Borough Council



at the heart of your
Community

Bournemouth
Borough Council



Q & A

No disposals will be made without full site assessments and public consultation, which will be locally advertised.

Play sites will be developed and designed with local children and teenagers, followed by consultation.

We're making a very small reduction in the overall number of play areas in the borough. A number of those identified to close are already out of use (e.g. Cheshire Drive).

We won't close play areas listed to close until the end of their useful and safe life.